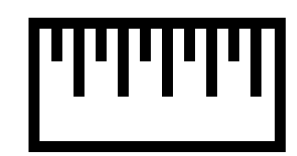


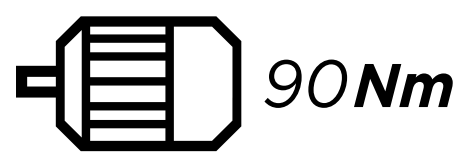
# SEVEN DAYS LIVING



ALUMINIUM FRAME  
S-M-L



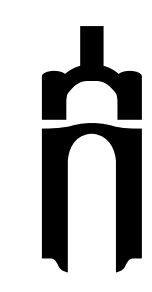
Brose ALU



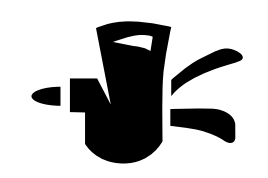
Fantic 630Wh



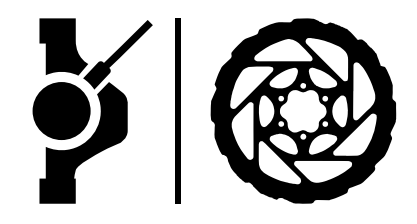
RockShox  
Recon RX, 100mm



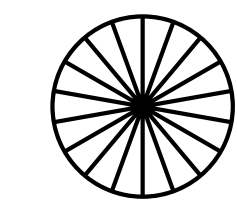
SRAM GX e-click  
10V



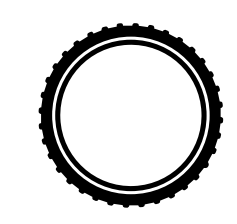
SRAM Level



GPM by Fantic



Schwalbe Super  
Moto



Sporturer Talisman,  
Gel Flow



FANTIC MOTOR behält sich das Recht vor, technische Eigenschaften ohne vorherige Ankündigung zu ändern.



SEVEN DAYS LIVING

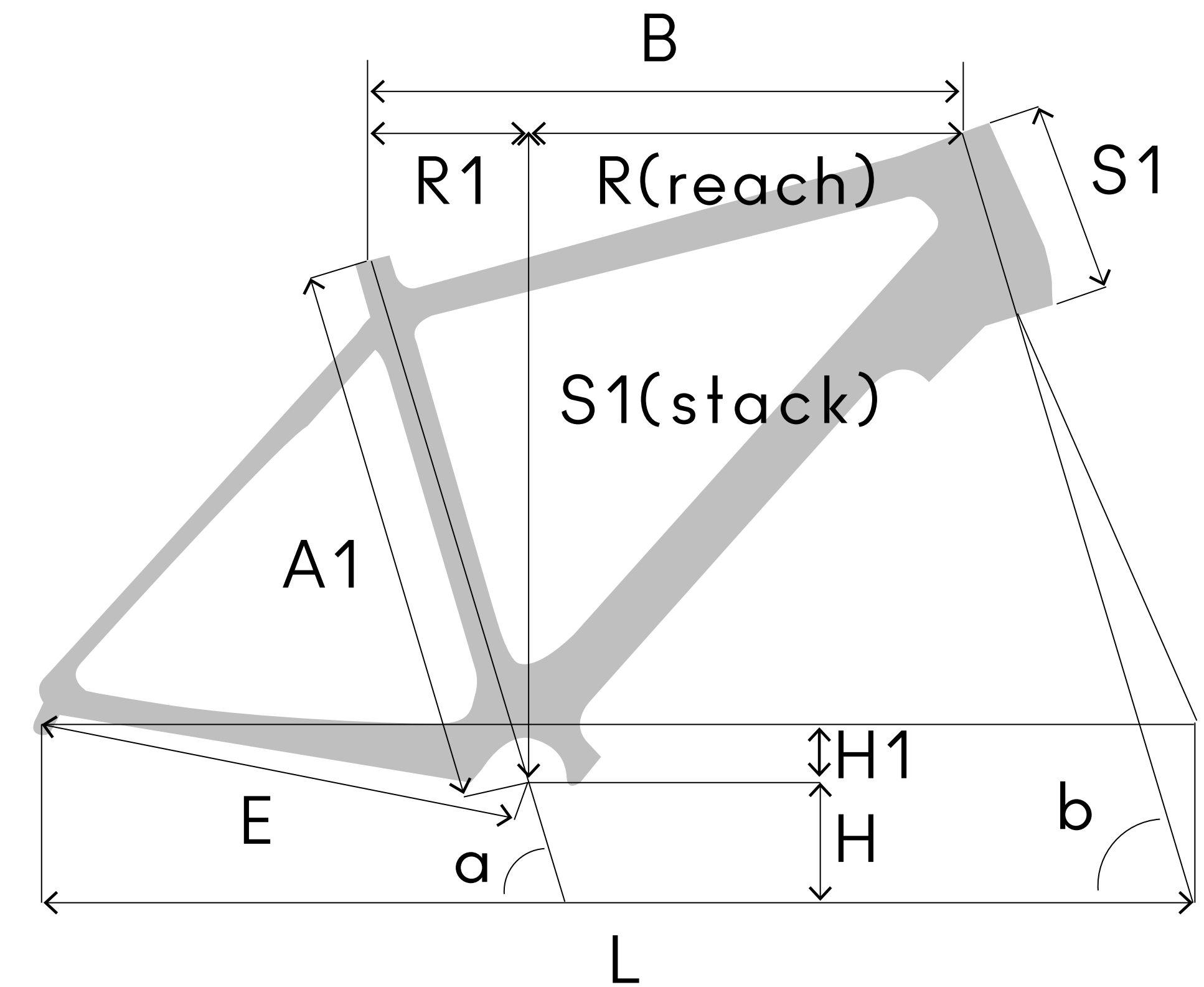




# SEVEN DAYS LIVING



<b>MOTOR</b>	Brose ALU 36 Volt, Max power: 250 Watt, Torque/Coppia: 90 Nm
<b>BATTERIE</b>	Fantic Integra, Lithium Ion, 36 Volt, 630Wh
<b>DISPLAY</b>	Brose-Marquardt multifunctional display & push-assistance selection unit
<b>RAHMEN</b>	Aluminium frame. Sizes: S - M - L
<b>GABEL</b>	RockShox Recon RX, 100mm
<b>SCHALTUNG</b>	SRAM GX e-click 10V
<b>FAHRRAD KURBEL</b>	Miranda Delta Isis , Miche 38T
<b>MOTORSCHUTZ</b>	Motor flange integrated in the frame for full motor protection
<b>SCHALTKASSETTE</b>	SRAM PG 1030 10-gear 11-36 teeth
<b>KETTE</b>	KMC e-10v, e-bike edition
<b>VORDERRADBREMSE</b>	SRAM Level steel hydraulic 2P, 180mm disc
<b>HINTERRADBREMSE</b>	SRAM Level steel hydraulic 2P, 160mm disc
<b>REIFEN</b>	Schwalbe Super Moto X E50, 27.5 X 2.8"
<b>FELGEN UND SPEICHEN</b>	GPM by Fantic, Aluminium, tubeless ready, Ø27.5
<b>VORDERRADNABE</b>	SRAM, 110mm Boost
<b>HINTERRADNABE</b>	SRAM, 148mm Boost
<b>LENKER</b>	FSA 720mm, rise 15 (custom)
<b>VORBAU</b>	FSA Varius ST, 100mm, regulated (custom)
<b>SATTEL &amp; GRIFFE</b>	Sporturer Talisman, Gel Flow / Sporturer Jammy Trekking
<b>PEDALE</b>	Aluminium



SIZE	S	M	L
<b>A1</b>	410	450	490
<b>B</b>	580.5	605.5	630.7
<b>E</b>	465.2	465.2	465
<b>H</b>	309.5	309.5	309.5
<b>H1</b>	50.5	50.5	50.5
<b>L</b>	1152.7	1161.1	1169.6
<b>R</b>	403.5	413.5	417.5
<b>R1</b>	177	192	212
<b>S</b>	616.9	628.7	654.5
<b>S1</b>	110	120	145
<b>a</b>	73.8°	72.8°	71.8°
<b>b</b>	67.8°	68.3°	68.8°